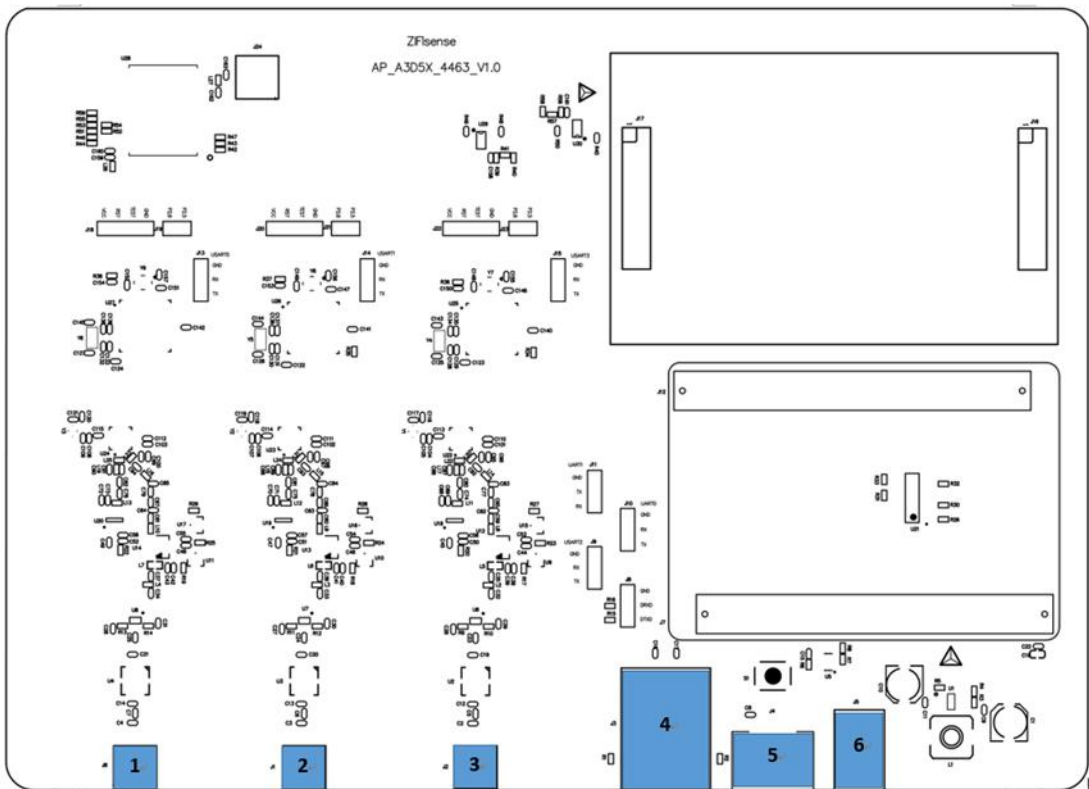




The AP is a bridge relaying data between end-devices and ZETA Server in the backend. AP connect to end-devices via ZETA protocol while connect to ZETA Server via standard IP connections. All connections support bi-direction transmission, and support unicast, multicast and broadcast to target devices.







## Interfaces



| No. | Description                 |
|-----|-----------------------------|
| 1   | Channel 1 antenna interface |
| 2   | Channel 2 antenna interface |
| 3   | Channel 3 antenna interface |
| 4   | RJ45 Ethernet               |
| 5   | USB                         |
| 6   | 5V DC power supply          |

| Datasheet           |  |   |
|---------------------|--|---|
| Type                | Parameter                                    | Remark  |
| Power supply        | DC 5V  | PoE/ AC 220V to DC 5V   |
| Working band        | Default<br>470MHz-490MHz                     | Can be customized to other sub-GHz band, such as 429/433/868/915/920 etc. |
| Peak variation      | 1ppm   | -   |
| Modulation          | 2-FSK/2-GFSK/PSK                             | -   |
| Data rate           | 0.1-2.4kps                                   | Can be customized to higher data rate for specific use                    |
| Receive sensitivity | -130dBm@300bps                               | Typical, $\pm 2$ dBm  |
| Tx power            | 15/17/20/23dBm                               | Configurable  |
| Bandwidth           | 3.8kHz                                       | UNB   |
| Capacity/Ch         | 10000(@300bps,10Bytes, 3%PER)                | Assume one device transmit 1 packet a day.                                |
| Maximum Ch support  | 3  | Can be customized to more channels.                                       |
| Duplex mode         | Default half-duplex                          | Can be customized to duplex mode.   |
| Working temp        | -30~75°C                                     | -   |
| Storage temp        | -40~125°C                                    | -   |
| Protection grade    | IP67   | -   |
| Frequency hopping   | Optional                                     | -   |
| Security            | Access Authentication, data encryption, etc. |   |
| Device size         | 188*268*45                                   | Unit: mm  |
| Weight              | 1.4kg  |   |

## Accessories

| No. | Name               | Description  | Picture   |
|-----|--------------------|--|---|
| 1   | 1.2m RF Antenna    | RF antenna install on AP.  |    |
| 2   | GPRS Antenna       | Not only for GPRS, but for 3/4G module use.<br><br>If the AP connect to the server via Ethernet port (by cable), the GPRS antenna is not required. |    |
| 3   | GPS Antenna        | Only used in ZETA-S mode.  |    |
| 4   | PoE power supply   | PoE power supply, notice that the data in port and power out port.   |  |
| 5   | 5V DC power supply | The maximum current should not be lower than 2A.   |  |
| 6   | USB-TTL cable      | To debug and configure the AP.   |  |

|                      |   |
|----------------------|---|
| Category             | Omni Antenna  |
| Model                | QFD-400D  |
| Frequency            | 470MHz<br>Can be customized to other sub-GHz band, such as 429/433/868/915/920 etc. |
| Bandwidth            | 14MHz   |
| Gain                 | 5dBi  |
| Vertical-beamwidth   | 25°   |
| VSWR                 | $\leq 1.5$ (Center Frequency $\leq 1.2$ )   |
| Nominal Independence | 50 $\Omega$   |
| Polarization         | Vertical  |
| Maximum power        | 100W  |
| Length               | 1.2m  |
| Weight               | 1kg   |
| Rated wind-velocity  | 60m/s   |
| Connecter            | N female (can be customized)  |
| Remark               | Fiberglass  |



### **Shanghai China**

Room 901, HongCao

Building 67

+86 (0) 21-61320820

[info@zifisense.com](mailto:info@zifisense.com)

[www.zifisense.com](http://www.zifisense.com)

### **Xiamen China**

Software Park Phase 3,

A2-1303

+86 (0) 592 6070310

[info@zifisense.com](mailto:info@zifisense.com)

[www.zifisense.com](http://www.zifisense.com)

### **Cambridge UK**

3 Charles Babbage

Road,

+44(0) 1223 491 099

[info@zifisense.com](mailto:info@zifisense.com)

[www.zifisense.co.uk](http://www.zifisense.co.uk)